

**ITEM 46. TRAFFIC TREATMENT – STREETScape IMPROVEMENTS –  
PRIMROSE AVENUE ROSEBERY**

**TRIM RECORD NO: 2018/020833**

**RECOMMENDATION**

It is recommended that the Committee endorse the installation of a 2.6 metre wide garden bed median with 'In-Road' trees in Primrose Avenue, Rosebery between the following points:

- (A) 0 metres and 37.5 metres north of Gardeners Road;
- (B) 66 metres and 96 metres north of Gardeners Road;
- (C) 0 metres and 32 metres north of Tweedmouth Avenue; and
- (D) 62 metres and 88 metres north of Tweedmouth Avenue.

**VOTING MEMBERS FOR THIS ITEM**

<b><i>Voting Members</i></b>	<b><i>Support</i></b>	<b><i>Object</i></b>
City of Sydney		
Roads and Maritime Services		
NSW Police – Redfern LAC		
Representative for the Member for Heffron		

**DECISION**

**BACKGROUND**

The City's Sustainable Sydney 2030 vision includes commitments to increase tree canopy cover by 50% by 2030, to green our City and improve the amenity of our streets. In 2011, Council adopted the City's Street Tree Master Plan which identifies a range of 'In-Road' tree planting sites, such as Primrose Avenue, Rosebery between Harcourt Parade and Gardeners Road.

The garden bed median with 'In-Road' trees on Primrose Avenue will present a valuable opportunity to increase tree canopy in the street as well as increasing safety by visually narrowing the street to reduce vehicle speeds. The median will also facilitate the provision of pedestrian refuges at intersections reducing the distance a pedestrian needs to cross the road.

**COMMENTS**

Primrose Avenue, Rosebery has a 12.8 metre wide kerb to kerb width, which can allow for a garden bed median with 'In-Road' trees to be planted without impacting traffic flow.

The street provides local access through Rosebery and currently does not service any bus routes.

The garden beds will allow space for the planting of fourteen trees to provide shade, cooling the street, improving the amenity and contributing towards the City's Sustainable Sydney targets. This treatment is consistent with the City's Greening Sydney Plan objective to increase tree canopy cover by 50% and the City's Sustainable Sydney 2030 vision.

Swept path analysis has been conducted to ensure unobstructed access to driveways along the street.

The proposed garden beds with 'In-Road' trees, will not only provide additional landscaping improvements, but will also improve pedestrian safety by reducing the distance which pedestrians need to cross the street and visually narrowing the street to reduce vehicle speeds.

### **CONSULTATION**

The City consulted local residents and businesses in the area. There were 85 letters sent out with two responses supporting the proposal and no responses opposing the proposal.

Submissions supporting the proposal noted that the changes would reduce the speed of vehicles and improve amenity in the street.

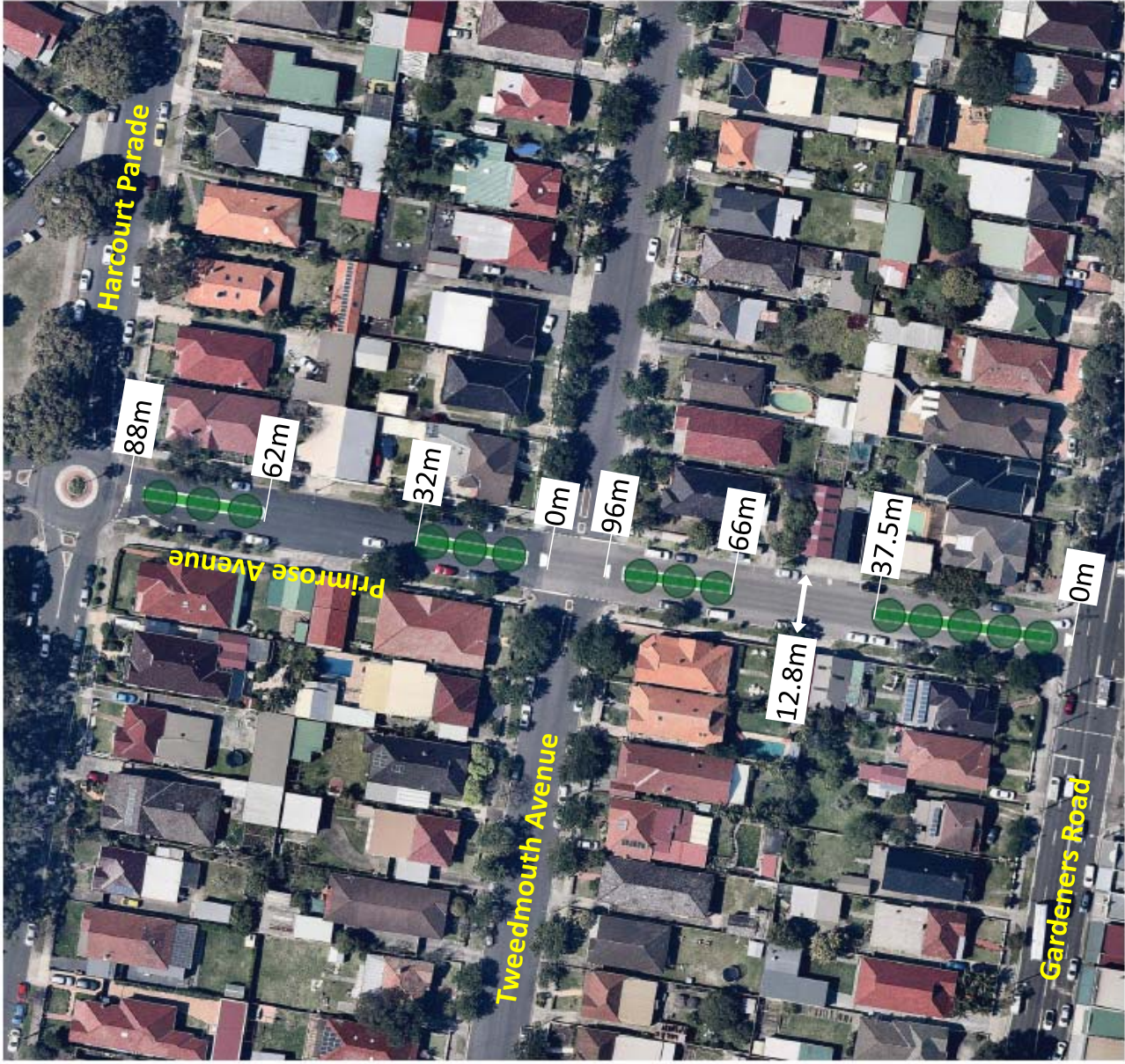
### **FINANCIAL**

Funds are available in the 2018/2019 budget for the In-Road Tree Planting Program.

Traffic Treatment – Streetscape Improvements – Primrose Avenue Rosebery

James Lawton, Project Manager Tree Planting





CENTRAL MEDIAN TREE PLANTING  
PRIMROSE AVENUE, ROSEBERY



EXAMPLE OF PROPOSED MEDIAN PLANTING  
BANNERMAN AVENUE, ROSEBERY



PROPOSED TREE SPECIES  
AGATHIS ROBUSTA (QUEENSLAND KAURI PINE)



